

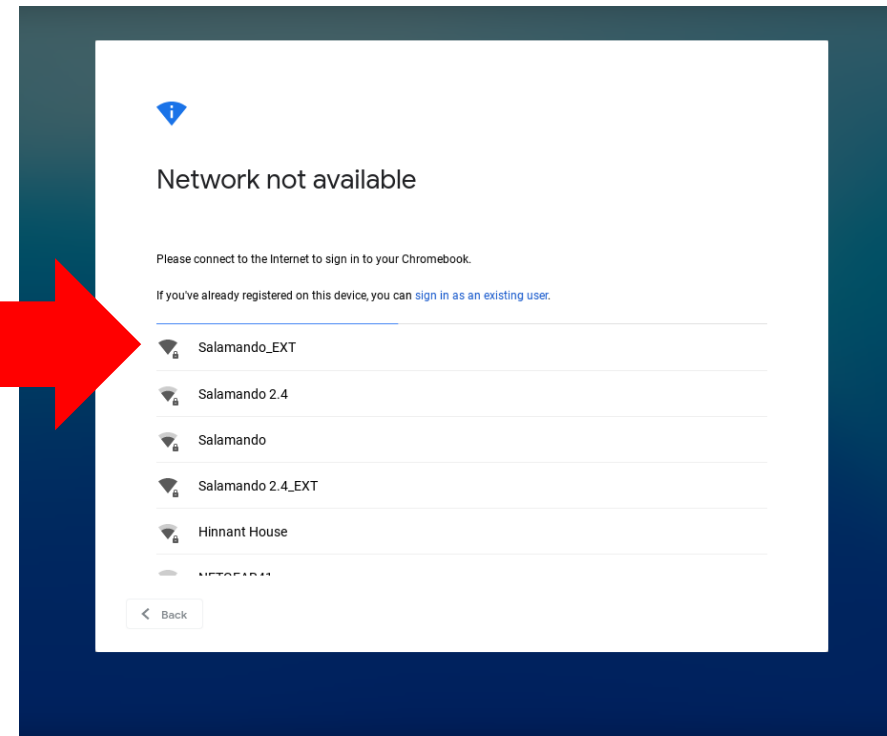
Welcome to Your Chromebook!

Let's login and find your class!



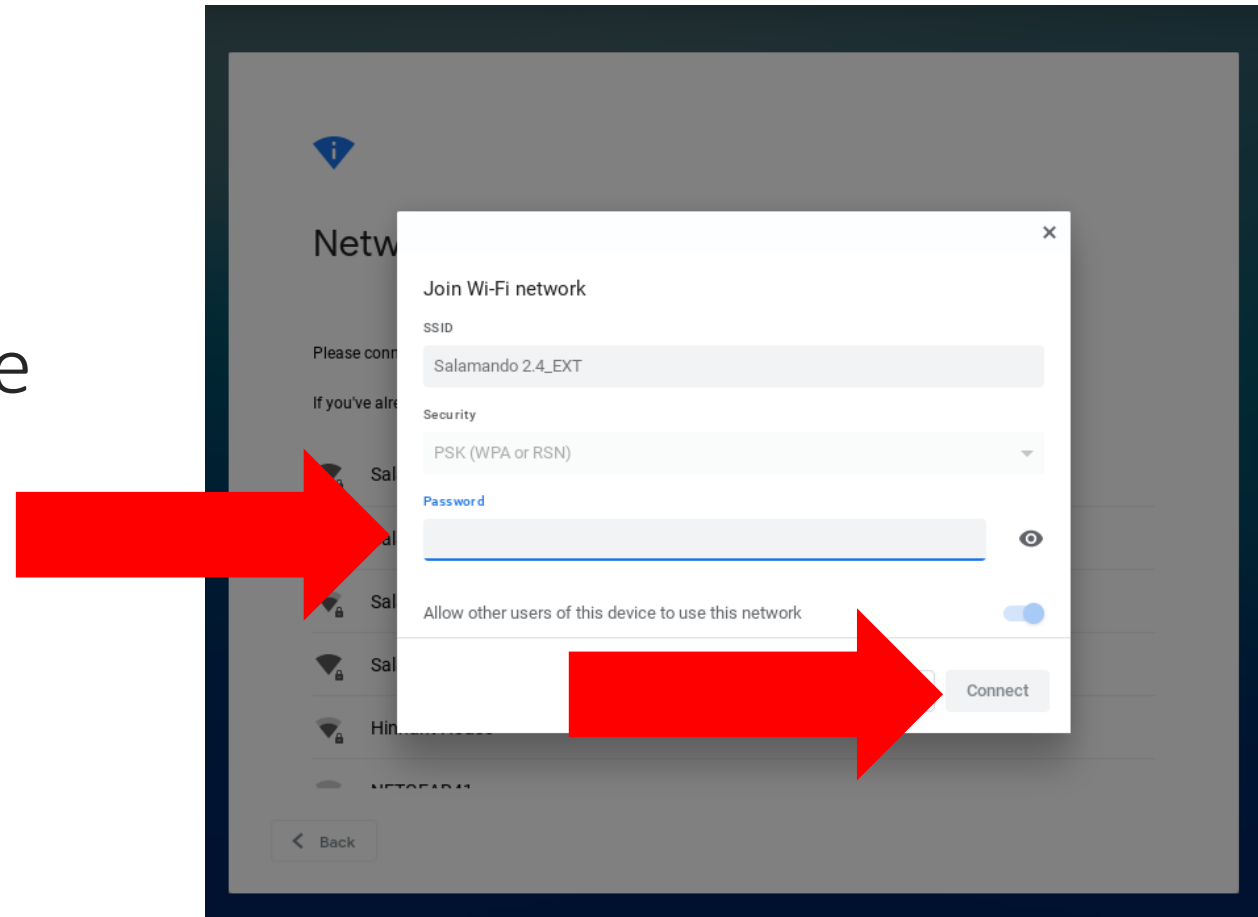
Open the lid to your charged Chromebook and connect to your home Wi-Fi.

Look for your home Wi-Fi connection in the list and click on it to connect to the internet.

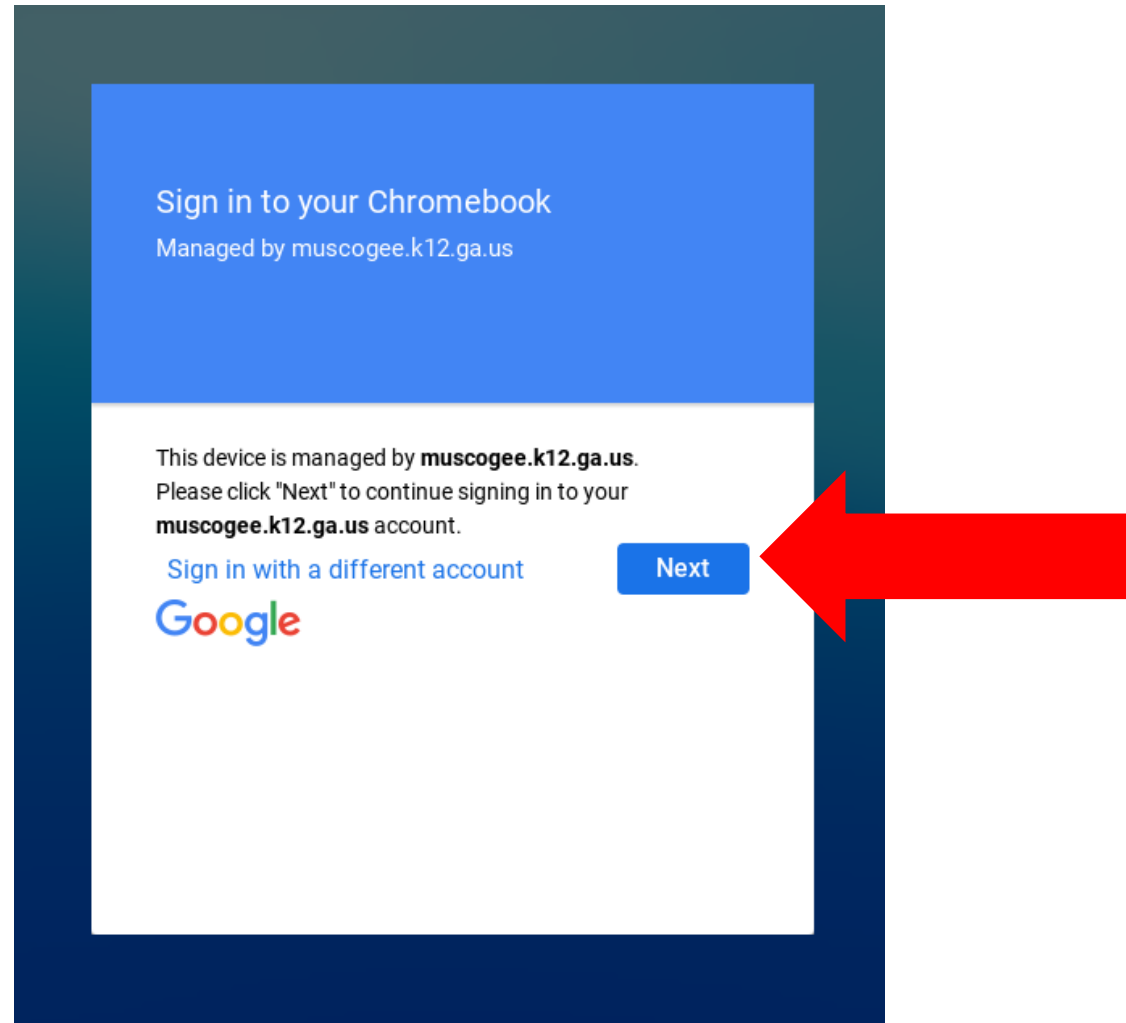


Enter Password & Click Connect

If your home Wi-Fi requires a password, type it in and click **Connect**.




Click Next to Sign In




Click Login with Active Directory

This sign-in service is hosted by clever.com

Muscogee Co School District
[Not your district?](#)

 Log in with Active Directory

 Log in with Clever Badges

Having trouble? [Get help logging in!](#)

[District admin log in](#)

Clever

[< Back](#)



Type in Your Login and Password

Students will use their GTID followed by @mcsdgas.com to login.

Login Example:

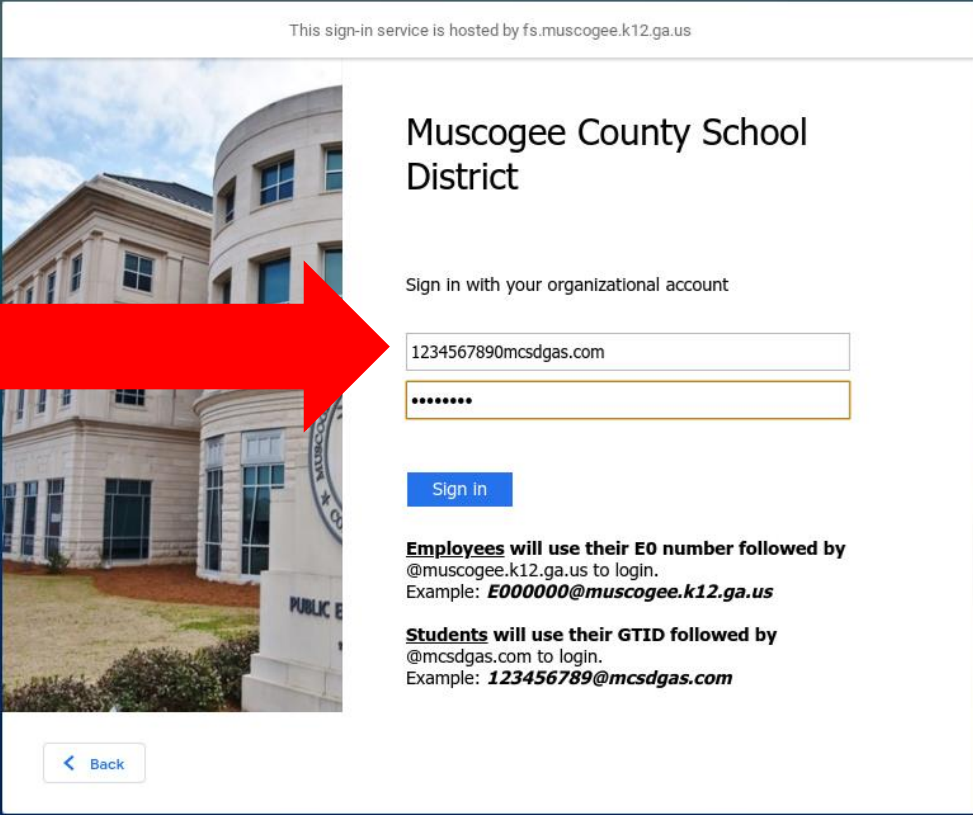
123456789@mcsdgas.com

Default passwords for grades 3-12 are in the format of **mcmddyy**, mc (for Muscogee County), then the two digit month, day and year of birth.

Default for K-2 is initpass.

Example default password for birthday 1/1/06:

mc010106



This sign-in service is hosted by fs.muscogee.k12.ga.us

Muscogee County School District

Sign in with your organizational account

[Sign in](#)

Employees will use their E0 number followed by @muscogee.k12.ga.us to login.
Example: **E000000@muscogee.k12.ga.us**

Students will use their GTID followed by @mcsdgas.com to login.
Example: **123456789@mcsdgas.com**

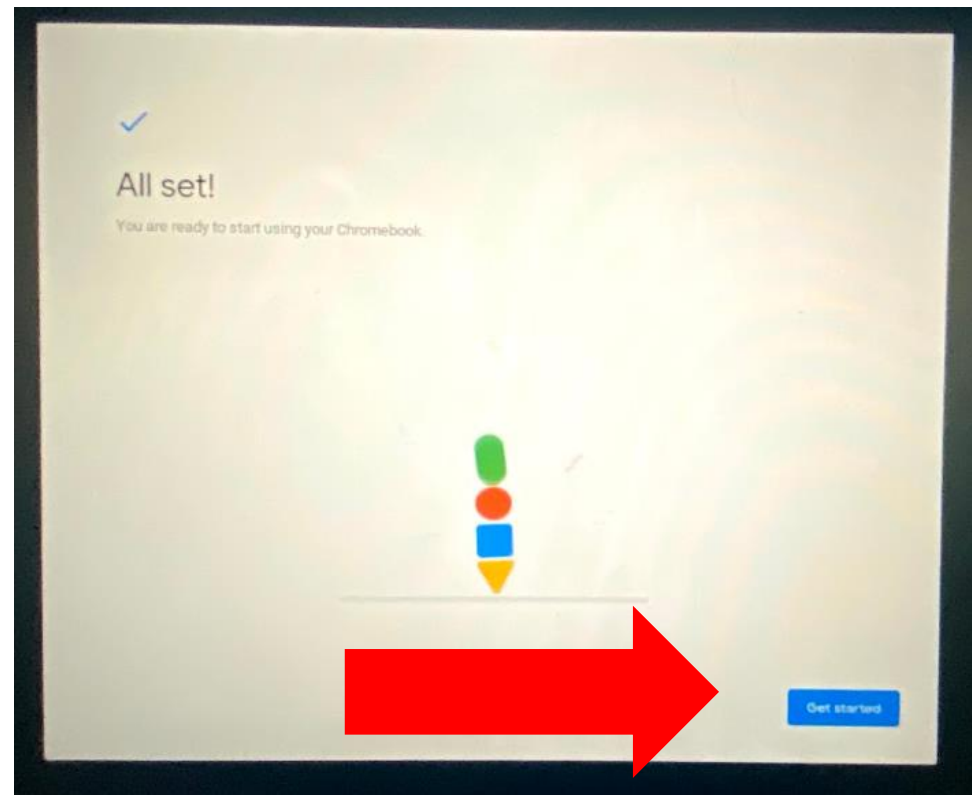
[Back](#)

After a few seconds you are All Set!

Click **Get Started** to begin!

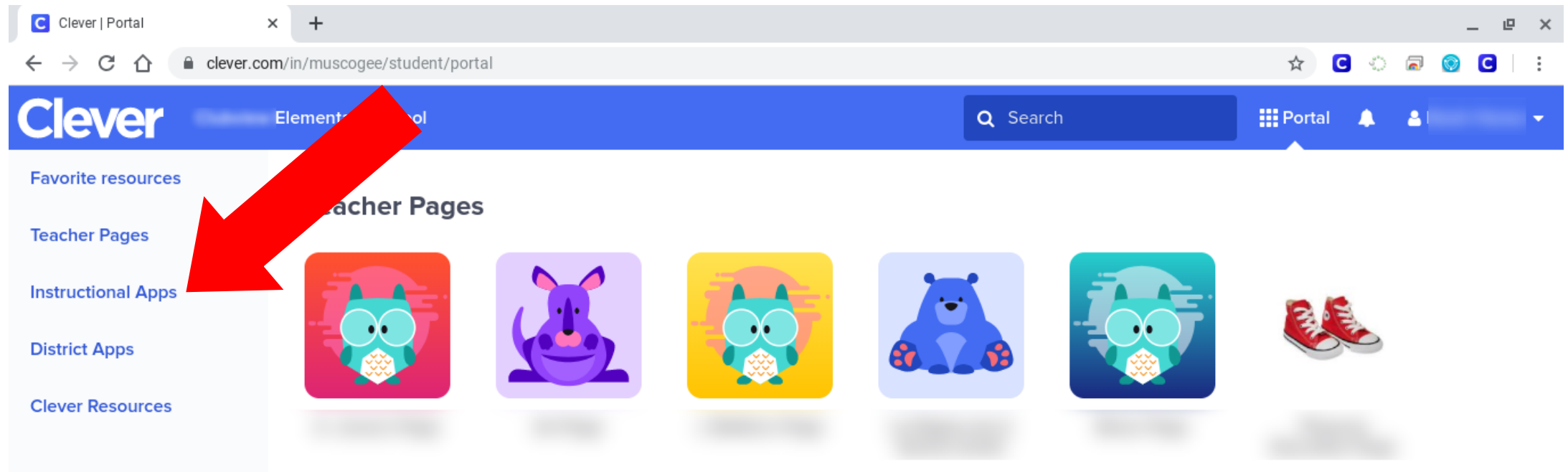
Clever will begin to load.

The first time you login, it may take several minutes for Clever to load.



Access Instructional Apps

On the Clever homepage, click on the Instructional Apps link on the left side of the screen.



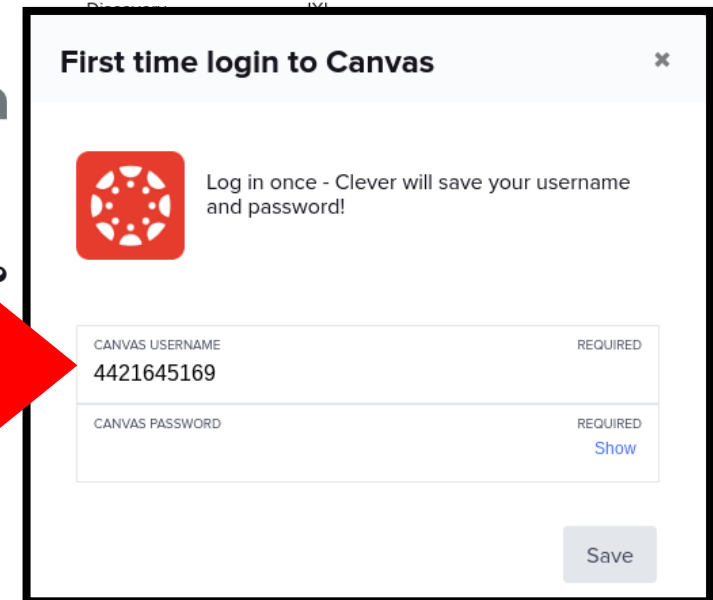
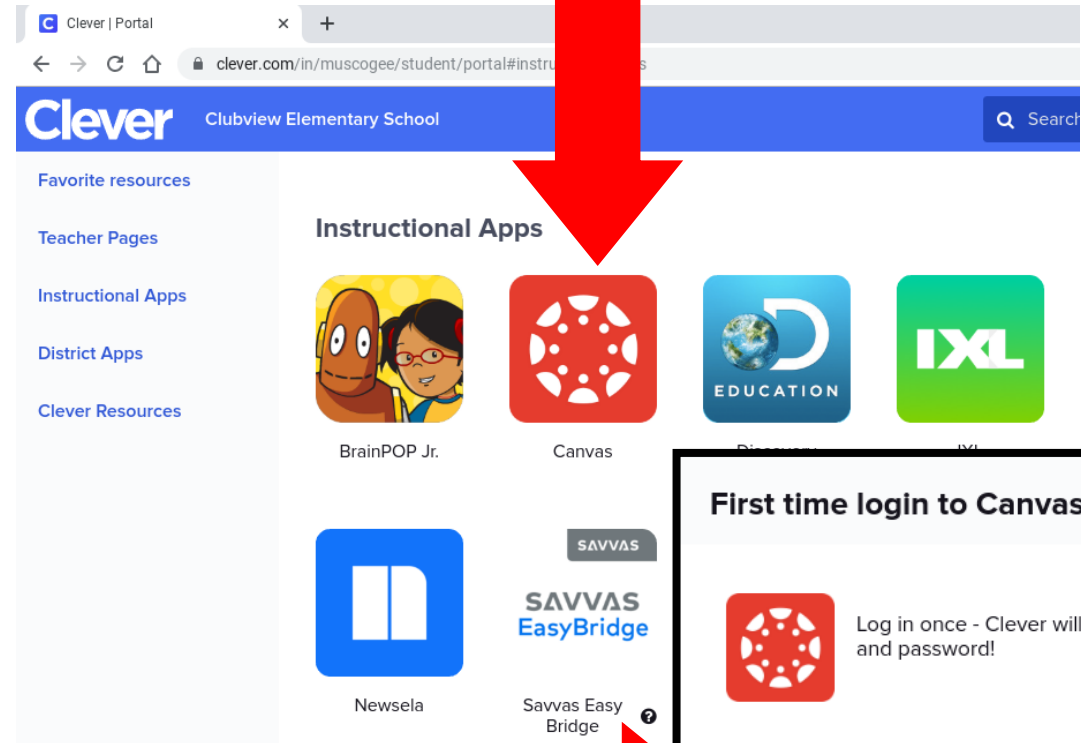
Access Canvas from Clever

After the Clever dashboard loads, scroll down to find and click the **Canvas** icon.



Canvas

If you have never logged in to **Canvas** before, you may be prompted to enter your password again and click Save.

A dialog box titled 'First time login to Canvas' with a close button (X) in the top right corner. It contains a message: 'Log in once - Clever will save your username and password!' next to the Canvas logo. Below the message are two input fields: 'CANVAS USERNAME' with the value '4421645169' and 'REQUIRED' label, and 'CANVAS PASSWORD' with a 'Show' link and 'REQUIRED' label. A 'Save' button is located at the bottom right of the dialog box. A red arrow points from the Canvas icon in the dashboard above to this dialog box.

Wait for Canvas to Load and Login

Pause for a few moments as Canvas logs you in to the program.

As you see these screens, do NOT attempt to type anything in, or press any buttons, **just wait**.

MUSCOGEE COUNTY SCHOOL DISTRICT

Parent of a Canvas User?
[Click Here For an Account](#)

GTID or E000000 or Parent Email

Password

Stay signed in

[Forgot Password?](#)

[Help](#) [Privacy Policy](#) [Acceptable Use Policy](#)

INST

MUSCOGEE COUNTY SCHOOL DISTRICT

Parent of a Canvas User?
[Click Here For an Account](#)

GTID or E000000 or Parent Email

Password

Stay signed in

[Forgot Password?](#)

[Log In](#)

[Help](#) [Privacy Policy](#) [Acceptable Use Policy](#) [Facebook](#) [Twitter](#)

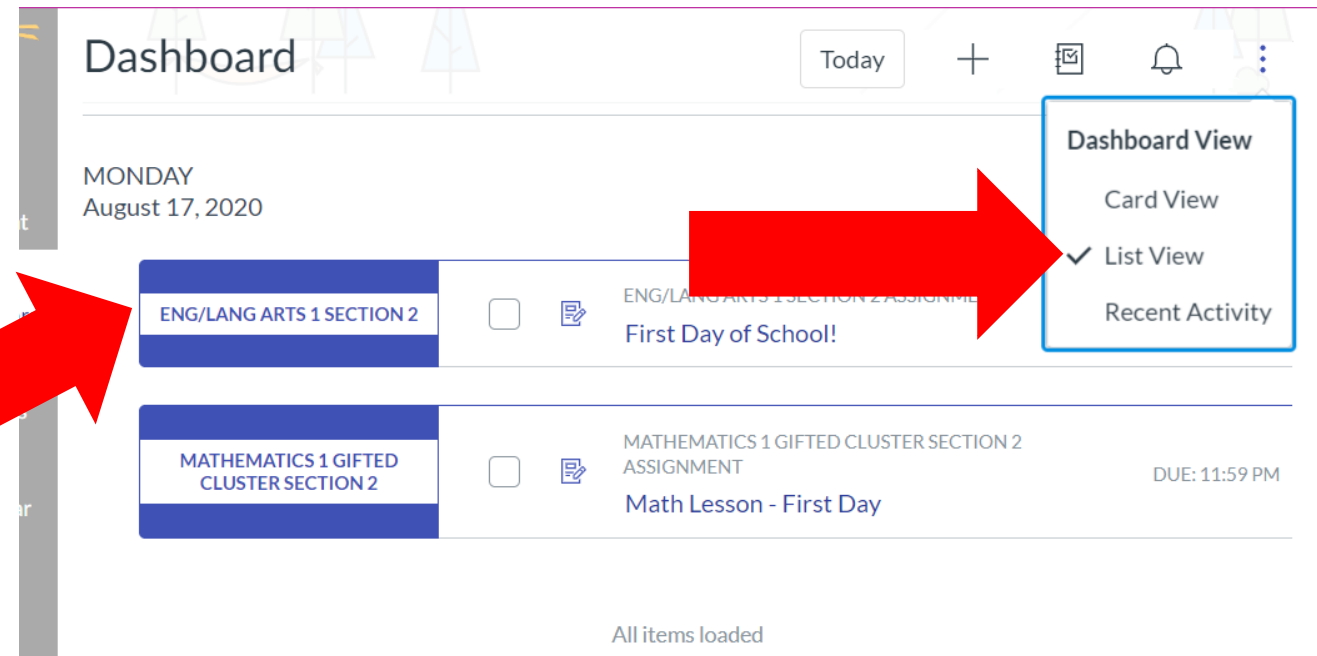
INSTRUCTURE

You're in the Canvas Dashboard!

Your Canvas Dashboard may look like this photo in the default **List View**.

Look for your first class to begin.

If your Canvas Dashboard does not look like this, it may be in Card View (see next slide).



The screenshot shows the Canvas Dashboard interface. At the top, it says "Dashboard" with a "Today" button and icons for calendar, notifications, and a menu. Below this, it displays "MONDAY August 17, 2020". The main content area shows a list of items:

- ENG/LANG ARTS 1 SECTION 2** with a checkbox and a document icon. The title is "ENG/LANG ARTS 1 SECTION 2 ASSIGNMENT" and the subtitle is "First Day of School!".
- MATHEMATICS 1 GIFTED CLUSTER SECTION 2** with a checkbox and a document icon. The title is "MATHEMATICS 1 GIFTED CLUSTER SECTION 2 ASSIGNMENT" and the subtitle is "Math Lesson - First Day". The due date is "DUE: 11:59 PM".

At the bottom, it says "All items loaded". On the right side, a blue-bordered menu is open, showing the following options:

- Dashboard View
- Card View
- List View
- Recent Activity

Two red arrows are overlaid on the image: one points from the left towards the class list items, and another points from the right towards the "List View" option in the menu.

Canvas Dashboard in Card View

Your Canvas Dashboard may appear in **Card View**.

You will find your class and click on the course card to begin.

Special Note: Notice the helpful **To Do** list on the right hand side.

Dashboard

1st Grade Music
Music 1
20-21-FY

Eng/Lang Arts 1 Section 2
Eng/Lang Arts 1
20-21-FY

Dashboard View
✓ Card View
List View
Recent Activity
✓ Color Overlay

To Do

- First Day of School!
Eng/Lang Arts 1 Section 2
100 points |
Aug 17 at 11:59pm |
- Math Lesson - First Day
Mathematics 1 Gifted
Cluster Section 2
Aug 17 at 11:59pm |

Show All

Recent Feedback

Nothing for now

View Grades

Have a GREAT school year!

Follow the directives from your school to continue.

Always be sure to keep your Chromebook in a safe location, charged and ready to go!

Parents and students can access the Technology Call Center at [706-748-2271](tel:706-748-2271), Monday - Friday.

