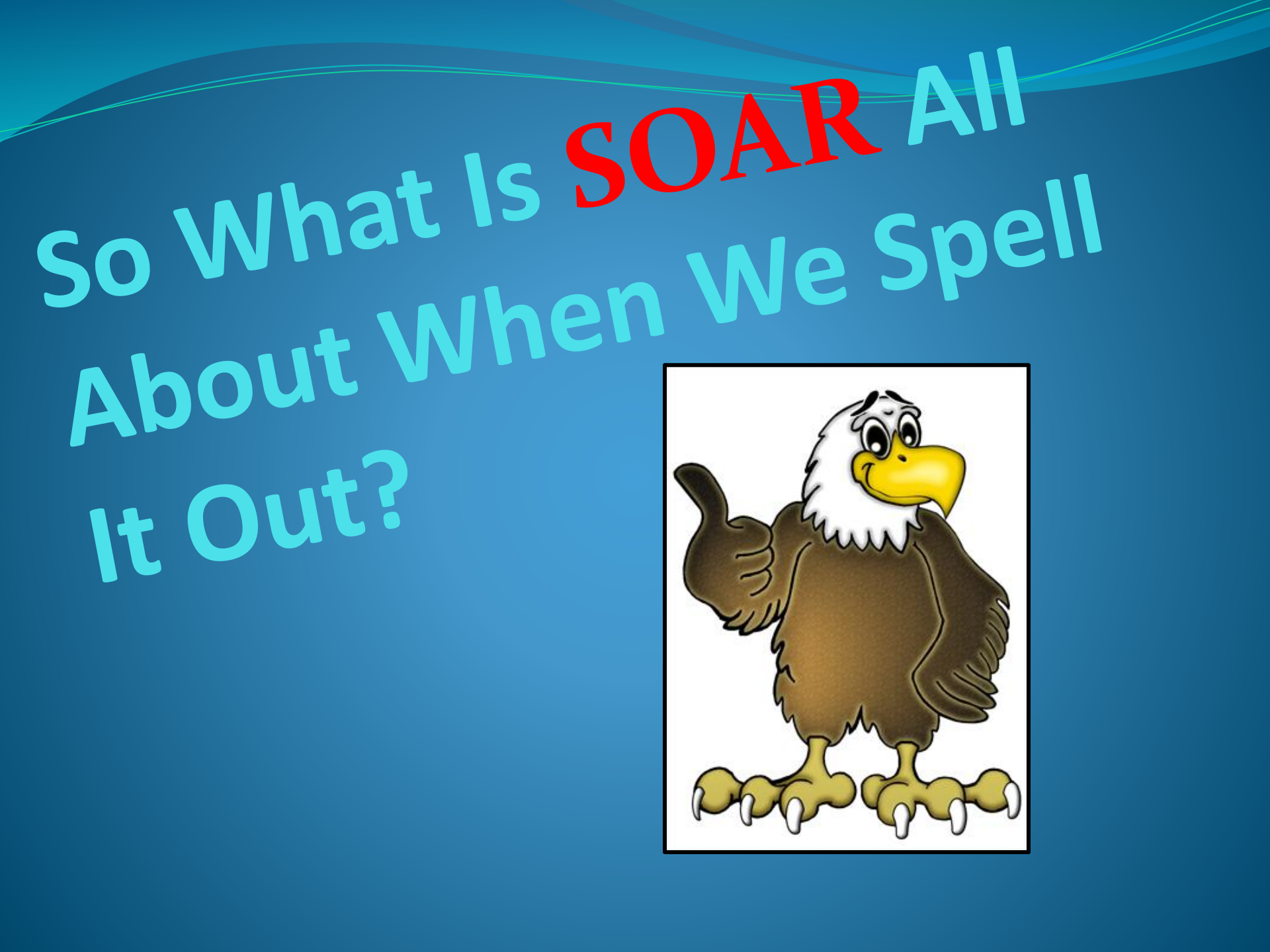




# Welcome to South Columbus Elementary!

Where We SOAR in  
Everything We Do!



So What Is **SOAR** All  
About When We Spell  
It Out?



# S

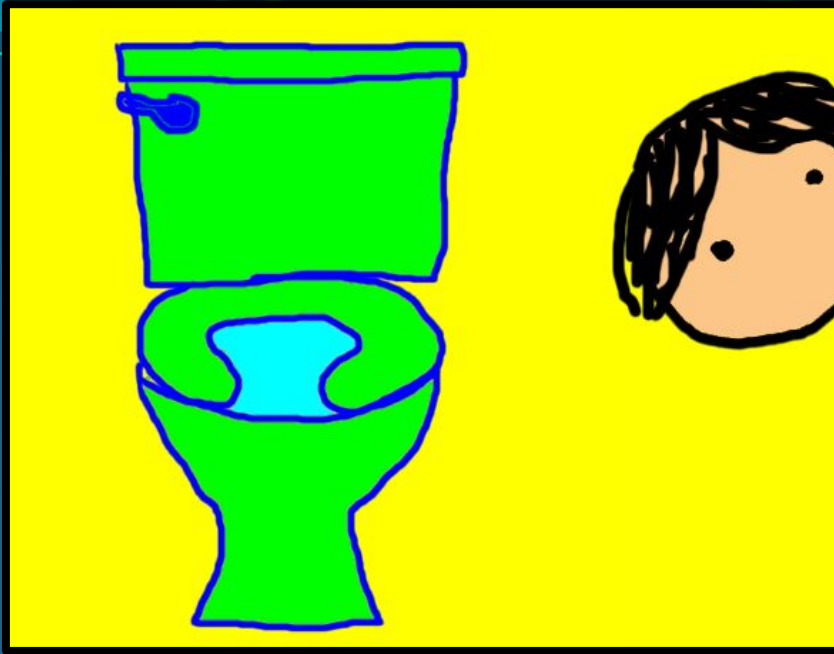


**I am** SAFE



# Halls

- Single file line
- Walk on the colored squares



## Bathroom

- No playing (Get in, Get out!)
- Maintain personal space





## Cafeteria

- Single file line
- Wait your turn
- Keep hands and feet to yourself



## Arrival & Dismissal

- Walk directly to the cafeteria, gym, or designated area
- Keep hands and feet to yourself



## Assemblies & Field Trips

- Follow entering and exiting procedures
- Keep hands and feet to yourself
- Stay with your class





# Computer Lab

- Enter silently
- Keep hands and feet to yourself
- Follow computer lab rules



# Classroom

- Keep hands and feet to yourself
- Maintain personal space



## Bus

- Remain seated and facing forward
- Board and exit the bus one at a time



I am Organized





## Hallway

- Stay with your class
- Keep your backpack closed



## Bathroom

- Flush the toilet
- Wash your hands



# Cafeteria

- Get milk, napkins, and utensils before sitting down



## Arrival & Dismissal

- Keep materials in your backpack





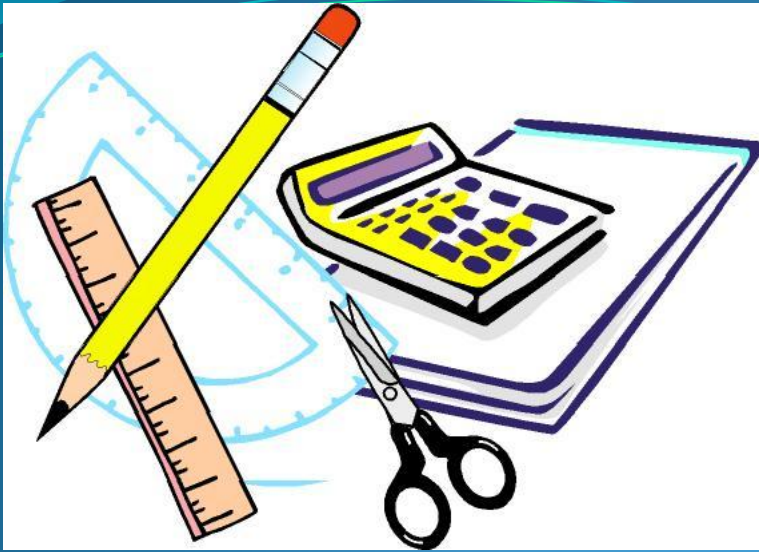
# Assemblies & Field Trips

- Sit in your assigned area



## Computer Lab

- Sit in your assigned seat



# Classroom

- Bring all necessary materials to class (books, paper, and pencils)



# Bus

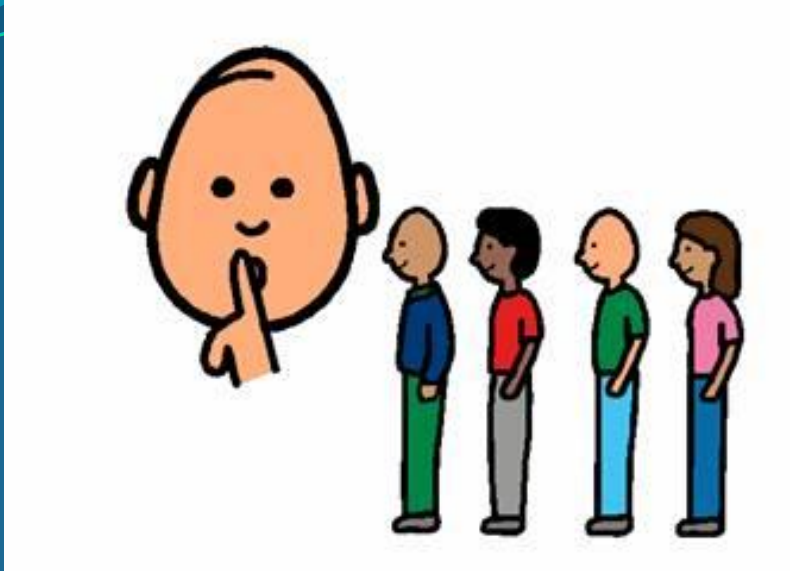
- Know your bus number





A

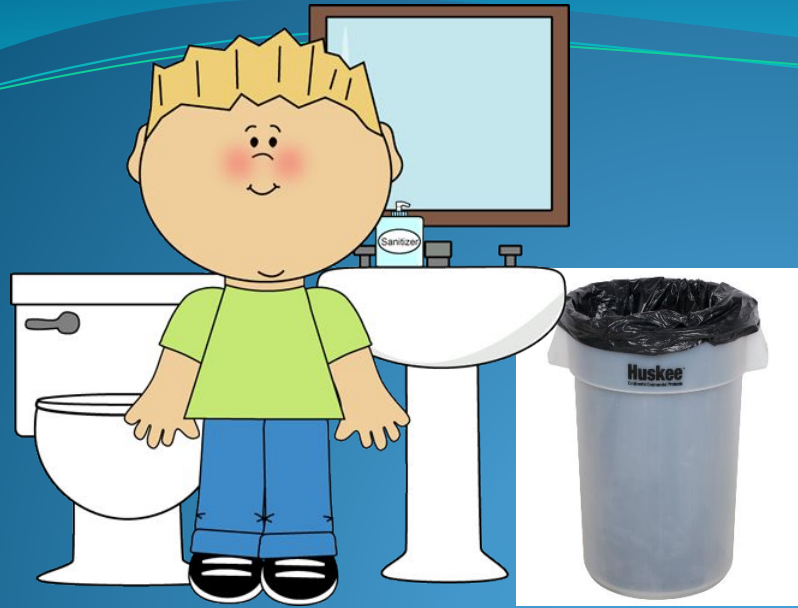
I am Accountable



A

## Hallway

- Maintain your personal space
- Walk directly to class
- Remain silent (volume 0)



A

## Bathroom

- Put trash in the trash can
- Report graffiti or acts of vandalism



A

## Cafeteria

- Clean your area when you're finished with your meal
- All food should remain in the cafeteria





# A

## Arrival & Dismissal

- Enter and depart the building silently (volume 0)
- Enter the building in school rule dress code
- Sit in your assigned area



# A

## Assemblies & Field Trips

- Await adult instruction
- Remain seated silently unless told otherwise



A

# Computer Lab

- Leave computer settings alone
- Sign in using your own login



# A

## Classroom

- Come to class on time and prepared
- Stay on task





A

## Bus

- Report directly to loading area when called
- Maintain personal space



# R

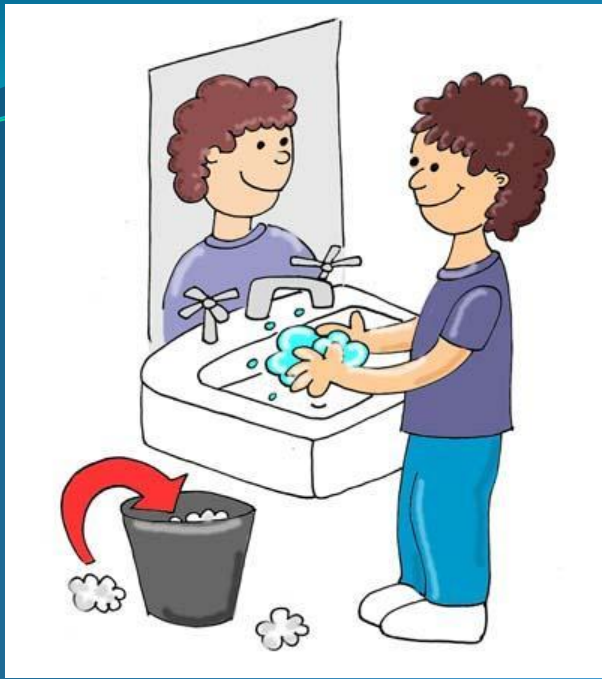
**I am** Respectful



# R

## Hallway

- Keep hands and feet to yourself
- Don't touch the walls and hallway displays
- Follow directions the first time



# R

## Bathroom

- Keep it clean
- Do not write on the walls
- Soft voice (volume 1)

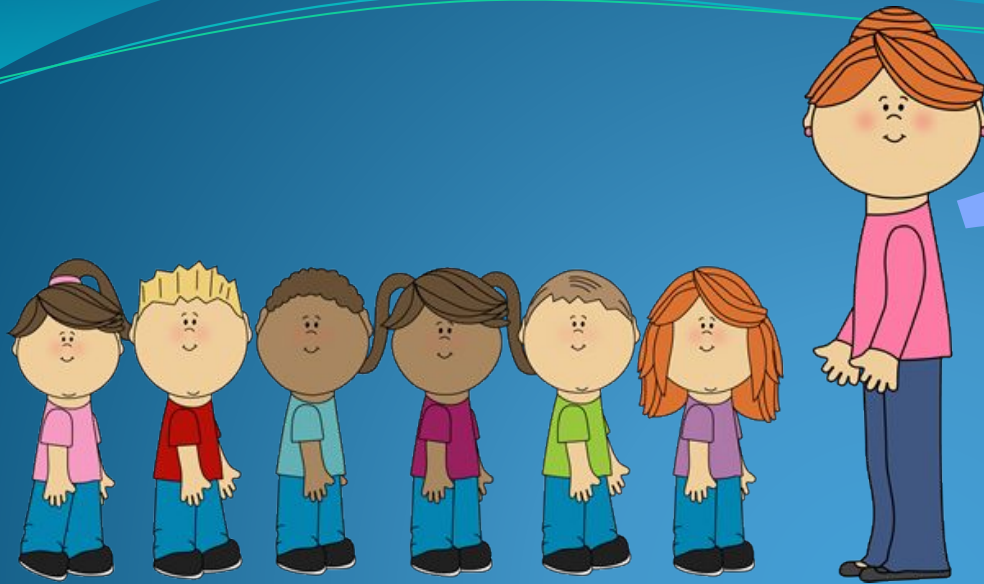




R

## Cafeteria

- Soft voice (volume 1)
- Follow the monitor's directions



## Arrival & Dismissal

- Maintain personal space
- Listen and follow adult directions



# R

## Assemblies & Field Trip

- Remain quiet when others are speaking
- Be attentive to speaker
- Respond in an appropriate manner





# R

## Computer Lab

- Follow the teacher's directions
- Log on only to websites approved for instructional purposes





# R

## Classroom

- Follow the classroom rules and procedures
- Keep the room clean



# R

## Bus

- Follow the teacher and bus driver directions
- Use soft voice (volume 1)

# Remember to **SOAR** Everyday!

We are....

**Safe**  
**Organized**  
**Accountable**  
**Respectful**



# All Together.....

**Call: I am SAFE**

**Response:** I am SAFE (Students hug themselves)

**Call: I am ORGANIZED**

**Response:** I am ORGANIZED (Students motion the shape of an “O” with their fingers)

**Call: I am ACCOUNTABLE**

**Response:** I am ACCOUNTABLE ( Students point at themselves using their thumbs)

**Call: I am RESPECTFUL**

**Response:** I am RESPECTFUL (Students salute military style)